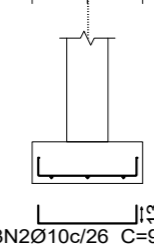
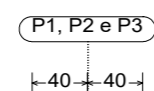
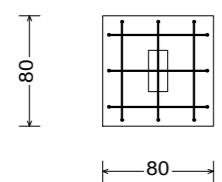
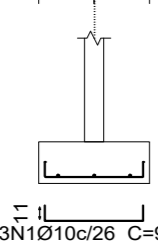
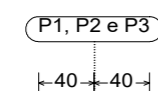


Fundação
Detalhamento fundação
Concreto: C20, em geral
Escala: 1:20

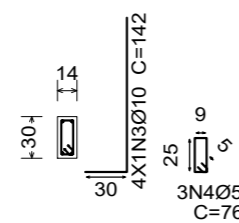
Resumo Aço Fundação Detalhamento fundação	Comp. total (m)	Peso (kg)	Total
CA-50 Ø10	62.6	39	39
CA-60 Ø5	11.4	2	2
Total			41

P1, P2 e P3

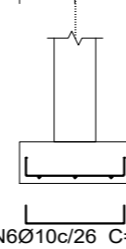
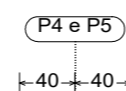
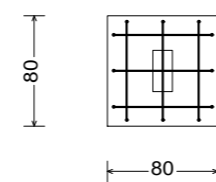
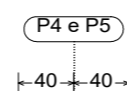


±30

P1, P2 e P3

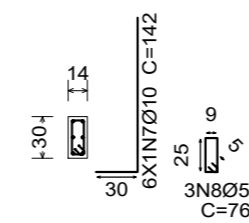


P4 e P5



±30

P4 e P5



Elemento	Pos.	Diam.	Q.	Dob. (cm)	Ret. (cm)	Dob. (cm)	Comp. (cm)	Total (cm)	CA-50 (kg)	CA-60 (kg)	
P1=P2=P3	1	Ø10	3	11	71	11	93	279	1.7		
	2	Ø10	3	13	71	13	97	291	1.8		
	3	Ø10	4	30	112		142	568	3.5		
	4	Ø5	3		76		76	228		0.4	
								Total: (x3):	21.0	0.4	
										1.2	
P4=P5	5	Ø10	3	11	71	11	93	279	1.7		
	6	Ø10	3	13	71	13	97	291	1.8		
	7	Ø10	6	30	112		142	852	5.3		
	8	Ø5	3		76		76	228		0.4	
								Total: (x2):	8.8	0.4	
									17.6	0.8	
								Ø5:	0.0	2.0	
								Ø10:	38.6	0.0	
								Total:	38.6	2.0	

FUNDAÇÕES

FOLHA Nº

PROCESSO Nº

RUBRICA

ARCOVERDE - PE

Endereço: Avenida Osvaldo Cruz, BR 232, nº 1238, bairro São Miguel

Proprietário: Seção Judiciária de Pernambuco

Autor do Projeto: Engº Civil Lúcio Castelo Branco - CREA Nº 1.768 D/PI

Resp. Técnico:

Proprietário:

Autor do Projeto:

CREA Nº 1.768 D/PI

R.T. CREA Nº

CREA

FUNDAÇÕES EM SAPATAS

PRANCHA

01/01

GUARITA - SUBSEÇÃO JUD. DE ARCOVERDE

FUNDAÇÕES - DIMENSÕES E ARMADURAS

Data: Outubro/2022

Desenho: Lúcio

Escala: Indicada

TIPO

ESTR.